

NOR-LAKE[®] SCIENTIFIC

UNDERCOUNTER BLOOD BANK REFRIGERATOR

Designed to meet the AABB, ANRC and FDA requirements. Advanced engineered design incorporates the latest in cabinet, refrigeration, temperature control and monitoring features. Provides energy efficient, convenient, safe and reliable performance for optimal storage temperature environments necessary for a wide range of life science, pharmacy, biological, medical, clinical and industrial applications.

Standard Product Features:

- Digital LED display microprocessor temperature controller
- Audible and visual Hi/Lo temperature alarm
- Adjustable control range from +2°C to +8°C factory preset at +4°C
- Remote alarm contacts
- Continuous product temperature display
- Product sensor with glycerin bottle
- Temperature chart recorder (free standing) and chart paper
- Exterior cabinet front, sides and back are painted white
- Exterior cabinet back and bottom are galvanized steel
- Interior cabinet liner and interior door smooth aluminum
- Cabinet and solid door are foamed-in-place with CFC Free High Density polyurethane foam insulation
- Heavy duty solid door with hinges
- Pull door handle
- Magnetic door gasket
- Centered key door lock, (2 keys)
- Four 4" legs
- 1 coated wire shelf
- Air cooled condensing unit
- Base mounted forced air refrigeration system
- Automatic defrost and condensate evaporation
- Air intake and exhaust through the base of the unit for build-in on three sides
- Sensor access port 1" diameter
- Warranties: 18 months parts and labor, 5 year compressor (US and Canada) 18 months parts (International)
- UL/CUL listed



Optional Features:

- Extra shelf
- Casters in lieu of legs
- Levellers in lieu of legs
- Stainless steel interior
- Stainless steel exterior
- 4-20ma output
- Export crating



NSBR051WMW/0



NSBR051WMW/0

Cabinet Shown With Optional Casters

NORLAKE[®]
SCIENTIFIC

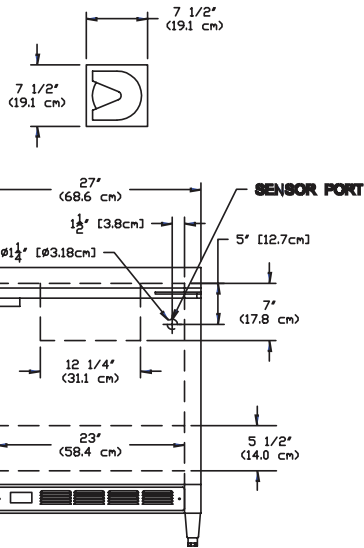


Committed to our environment

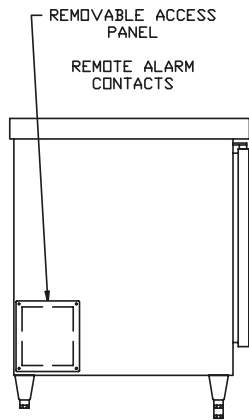


Nor-Lake, Inc.
Registered to ISO 9001:2008
File No. 10001816

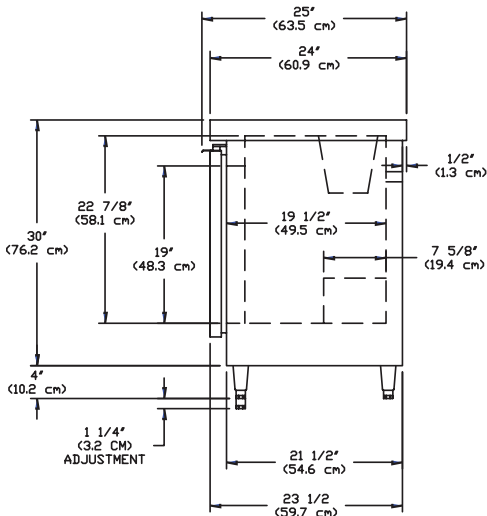
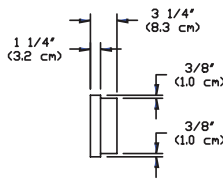
NOR-LAKE SCIENTIFIC
A Division of
NOR-LAKE, INCORPORATED
727 Second Street
P.O. Box 248
Hudson, Wisconsin 54016
800-477-5253
715-386-2323
800-388-5253 PARTS
715-386-4290 FAX
www.norlakescientific.com



NSBR051WMW/0 - Front



NSBR051WMW/0 - Left Side View



NSBR051WMW/0 - Right Side View

SPECIFICATIONS	
Model	NSBR051WMW/0
Crated Height (in) (cm)	34" (86)
Crated Width (in) (cm)	31" (78)
Crated Depth (in) (cm)	28" (71)
Crated Weight (lbs) (kg)	200 (91)
Interior Height (in) (cm)	22-7/8" (58)
Interior Width (in) (cm)	23" (58)
Interior Depth (in) (cm)	19-1/2" (49)
Overall Height (in) (cm) - Adjustable	34" to 35-1/4" (86 to 89)
Overall Width (in) (cm)	27" (68)
Overall Depth (in) (cm)	25" (63)
Gross Cubage (ft.3) (m3)	5.1 (0.1)
450 ML Bags # units**	80
Shelf Area (sq. ft.) (m ²)	2.6 (0.2)
Number of Shelves	1
Number of Legs	4
Condensing Unit Size	1/5HP
Refrigerant	R134a
Electrical Characteristics	115/60/1
Cord & Plug Furnished	Yes
Maximum Fuse Size	15 AMPS
NEMA Plug Configuration	5-15P
Total Amp Draw /0	4.3

Specifications subject to change without notice.

* The overall heights shown in the table and drawings are with 4" adjustable legs. With the 3-5/8" casters the overall height is 33-5/8". With 2" levelers the overall height is adjustable from 32" to 32-1/2".

** Capacity may vary according to loading preferences and contents.

Voltage Model Suffix Code	Voltage Description	NEMA Plug	NEMA Receptacle
/0	115V, 1PH, 60HZ	5-15P	5-15R

NORLAKE SCIENTIFIC

Revision Date: 9/09
 ©2009 NOR-LAKE, INC.
 Printed in the U.S.A.
 Part Number: 123250

