

NOR-LAKE SCIENTIFIC
 Division of Nor-Lake Incorporated
 727 Second Street
 P.O. Box 248
 Hudson, Wisconsin 54016

800-477-5253
 715-386-2323
 800-388-5253 Parts
 715-386-4290 FAX
 www.norlake.com



UNDERCOUNTER FREEZERS

-20°C Auto and Manual Defrost
 For General Laboratory / Pharmacy Storage



Designed to meet the demanding requirements of scientific and laboratory applications. Special cabinet incorporates industrial quality with a heavy duty refrigeration system to maintain your valuable products.

SPECIFICATIONS FOR: NSLF051WMW/0 & NSLF051WMW/0M

- **Exterior finish:** The exterior front, door, top and sides are white painted enamel. The back and bottom are galvanized steel.
- **Interior finish:** Interior liner and interior door panel are aluminum.
- **Insulation:** The complete cabinet and door are foamed-in-place with high density polyurethane foam insulation.
- **Hardware:** Pull door handle, door lock, one adjustable gray epoxy coated shelf & four 4" legs.
- **Electrical:** 115/60/1 cord and plug furnished.
- **Refrigeration:** Base mount refrigeration system. Undercounter/countertop freezers may be built in on three sides. The air intake and exhaust is through the base in front of the unit. Freezers are available with a forced air evaporator (NSLF051WMW/0) or a wrap around cold wall evaporator (NSLF051WMW/0M). Electric defrost is standard on the forced air evaporator freezer models. Manual defrost is standard on the cold wall evaporator freezer models. Adjustable control range from -10°C to -20°C. Factory preset at -20°C.
- **Approvals:** UL and C-UL listed.**

STANDARD FEATURES

- Air-cooled condensing unit
- Aluminum interior
- **Automatic defrost on forced air model- NSLF051WMW/0**
- **Manual defrost on cold wall model - NSLF051WMW/0M**
- 4" legs
- Door lock
- Expansion valve system on forced air model
- Galvanized back & bottom
- Gray epoxy coated shelf
- High density polyurethane foam insulation
- Magnetic gasketing
- Non-CFC refrigerant
- Adjustable control range from -10°C to -20°C. Factory preset at -20°C
- White enamel front, door, top & sides
- UL & C-UL LISTED**
- Warranties: 18 month parts and labor. 5 years compressor (US and Canada) 18 months parts (International)

OPTIONAL FEATURES

- Casters in lieu of legs
- 2" levelers in lieu of legs
- Hi/Lo alarm with remote contacts (mounted remote)
- Stainless steel exterior (Galv. back)
- Stainless steel interior
- Temperature chart recorder
- Chart Paper
- Digital Thermometer with Hi/Lo Alarm (Field Installed)
- White Interior

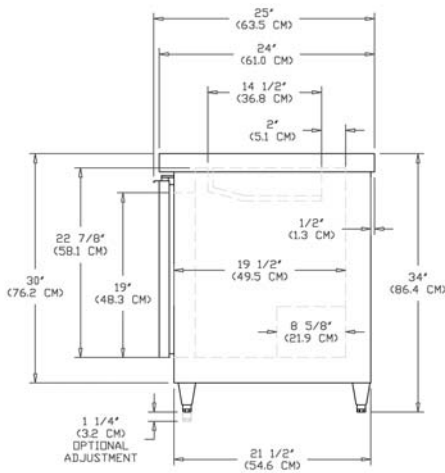


Nor-Lake, Inc.
 Registered to ISO 9001:2000
 File No. A3204

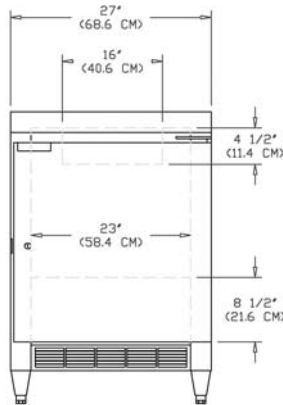
** C-UL is Underwriters Laboratories Safety Certification Mark which indicates that UL has tested the equipment to applicable CSA Standards.

UNDERCOUNTER FREEZERS

SIDE

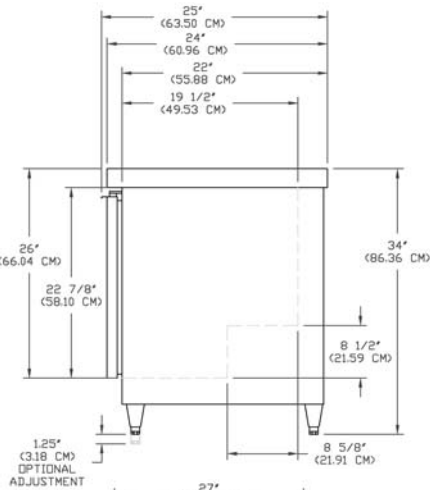


FRONT

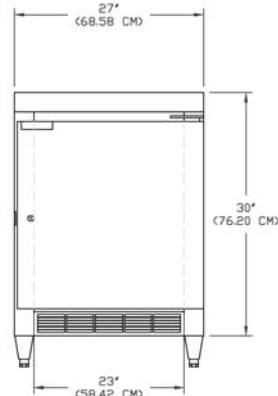


NSLF051WMW/0 Freezer - Forced Air Model

SIDE



FRONT



NSLF051WMW/0M - Cold Wall Model

SPECIFICATIONS

Model	NSLF051WMW/0		NSLF051WMW/0M	
	Forced Air		Cold Wall	
Crated Height	34-1/4"	87 cm	34-1/4"	87 cm
Crated Width	31-1/4"	79.38 cm	31-1/4"	79.38 cm
Crated Depth	28"	71.12 cm	28"	71.12 cm
Crated Weight (lbs) (kg)	180	81.65 kg	180	81.65 kg
Interior Height	22-7/8"	58.10 cm	22-7/8"	58.10 kg
Interior Width	23"	58.42 cm	23"	58.42 cm
Interior Depth	19-1/2"	49.53 cm	19-1/2"	49.53 cm
Overall Height-Adjustable*	34" to	86.36 to	34" to	86.36 to
	35-1/4"	89.54 cm	35-1/4"	89.54 cm
Overall Width	27"	68.58 cm	27"	68.58 cm
Overall Depth	25"	63.50 cm	25"	63.50 cm
Gross Cubage (ft. ³) (m ³)	5.94	0.17	5.94	0.17
Shelf Area (sq. ft.) (m ²)	2.6	0.25	2.6	0.25
Number of Shelves	1		1	
Number of Casters (opt.)	4		4	
Number of Legs (std.)	4		4	
Condensing Unit Size	1/2		1/2	
Refrigerant	R-404A		R-404A	
Electrical Characteristics	115/60/1		115/60/1	
Cord & Plug Furnished	Yes		Yes	
Maximum Fuse Size	15		15	
NEMA Plug	5-15P		5-15P	
Total Amp Draw	6.9		6.0	

Specifications subject to change without notice.

* The overall heights shown in the table and drawings are with 4" adjustable legs. With the 3-5/8" casters the overall height is 33-5/8". With 2" levelers the overall height is adjustable from 32" to 32-1/2".

NORLAKE SCIENTIFIC[®]

Revision Date: 11/05
 © 2005 NOR-LAKE, INC.
 Printed in the U.S.A.
 Part Number: 101325

